

Introduction

E-Band Communications Corporation (EBCC) founded in late 2003 to develop ultra-high capacity wireless communications systems for the 70/80 GHz *e-band* spectrum utilizing leading-edge RF MMIC technology providing best-in-class link performance. These millimeterwave communication systems provide carrier grade performance for gigabit and multi-gigabit throughputs achieving link distances over several miles. Our products address the requirements of carriers, enterprises, cable, government, and internet service providers building cost-efficient wireless multi-gigabit IP networks. E-Band technology provides solutions for interconnection and backhaul of 4G, WiMAX, mobile networks, distributed antennas systems (DAS) and remote radio heads (RRH), Gigabit Ethernet access network connections, last mile access, fiber backup, and network extension applications.

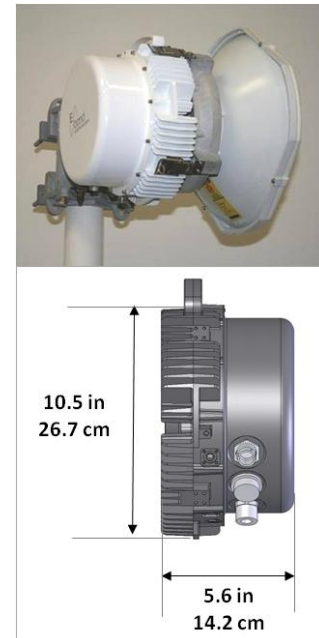
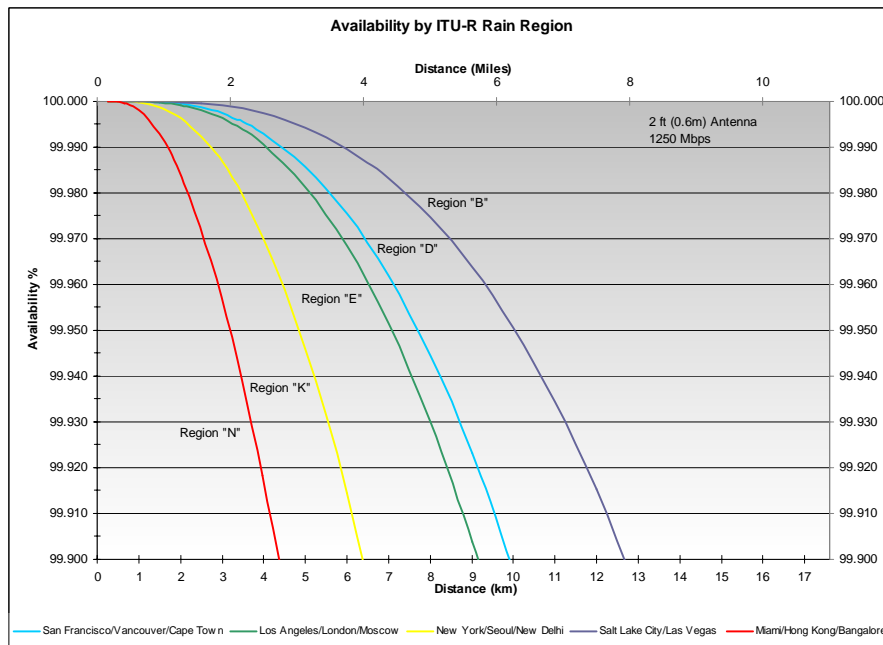
PRODUCT FEATURES

- Full duplex wire speed Gigabit Ethernet
- Typical link distances exceeds 1.5 Miles/ 2.5 Km for 99.99% availability
- Low Latency for multimedia applications
- Interference free operation
- Rapid Licensing
- Simple installation and maintenance using PC or PDA
- Supports multiple network architectures including:
 - Point-to-Point
 - Mesh
 - Repeater

APPLICATIONS

- WiMAX backhaul
- Mobile backhaul
- DAS/RRH fronthaul
- Local Area Network Extension
- Remote Storage Access
- Metropolitan Area Networks (MAN)
- Redundant Access / Network Diversity
- Disaster Recovery
- Homeland Security

Typical Link Distances



System Parameters

Frequency Band	71 - 76 GHz 81 - 86 GHz
RF Interface	FDD
Modulation	DBPSK
Frequency Source	Synthesizer
Configurations	Non-Protected Hot Standby Repeater Mesh
Latency	<5 μ s
Forward Error Correction	RS

Tributary

Data Rate	1250 Mbps full duplex (Ethernet)
Optional Data Rates	768 Mbps, 1536 Mbps (OBSAI), 1228.8 Mbps (CPRI)
Standards Compliance	IEEE 802.3z
Interface	Fiber, LC connector or Copper, RJ-45

Electrical / Environmental

Input Voltage	-48 VDC (-40.5 to -57 VDC); 120 VAC 60 Hz
Temperature Range	-33°C to +55°C / -27°F to +131°F
Altitude	15000 ft / 4500 m
Humidity	Outdoor Unit All Weather

Management

Craft Interface	Embedded web based (HTML) server
EMS	SNMP v1

Physical

Weight	11.5 lbs / 5.2 Kg
Dimensions	Diameter 10.5 in / 26.7 cm Height 5.6 in / 14.2 cm

Regulatory

US	FCC 1.1310 RF MPE limits FCC Part 101
----	--

Antenna

1 ft (0.3 m)	2 ft (0.6 m)
43.8 dBi	51 dBi
0.9° BW	0.4° BW
Fine adjust pole mount fitting 2.5 to 4.5 in. OD	